



GEARHEADS Frame size 80mm sq. (3.15 in. sq.)

METAL TYPE & BALL BEARING TYPE

▶ **RATED TORQUE OF GEARHEAD**

MODEL	Speed(rpm)		500	300	200	120	100	60	50	30	20	15	10	6	5	3	2	1	
	Ratio	Speed	50Hz	3	5	7.5	12.5	15	25	30	50	75	100	150	250	300	500	750	1500
			60Hz	3.6	6	9	15	18	30	36	60	90	120	180	300	360	600	900	1800
L8HK□M L8HK□B L8G10D(DECIMAL)	High	kg-cm	4.3	7.1	10.6	17.7	21.3	31.9	38.3	57.8	80	80	80	80	80	80	80	80	
	Low		1.3	2.2	3.3	5.6	6.7	10.0	12.0	18.2	27.2	36.3	54.5	80	80	80	80	80	
	High	N-m	0.42	0.69	1.04	1.74	2.08	3.13	3.76	5.66	7.84	7.84	7.84	7.84	7.84	7.84	7.84	7.84	
	Low		0.13	0.22	0.33	0.55	0.65	0.98	1.18	1.78	2.67	3.56	5.34	7.84	7.84	7.84	7.84	7.84	
	High	oz-in	59	98	148	246	295	444	532	802	1111	1111	1111	1111	1111	1111	1111	1111	
	Low		19	31	46	77	93	139	167	252	378	504	756	1111	1111	1111	1111	1111	

- * The normal torque is that the motor and gearhead are directly coupled.
- * Insert the denominator of reduction ratio in □ of gearhead model name.
- * Actual rotation speed is 2~15% less than synchronous speed.
- * ■Color indicates that the rotation of gearhead shaft is in opposite direction as output shaft of motor.

With Decimal Gearhead

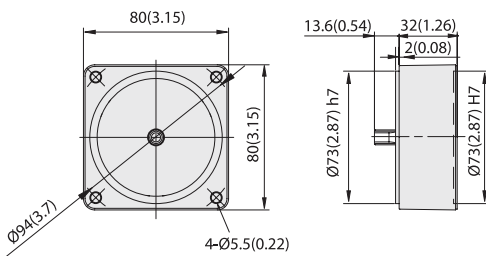
SPEED CONTROL
INDUCTION MOTORS

DIMENSIONS

Unit : mm(inch)

DECIMAL GEARHEAD

L8G10D

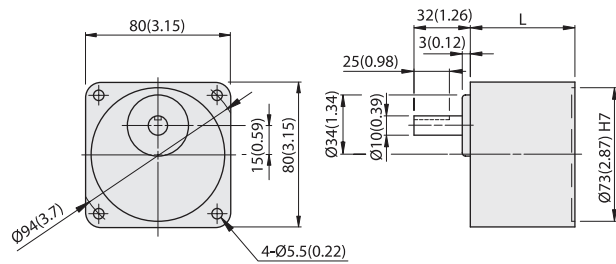


WEIGHT 0.4kg(0.88 lb)

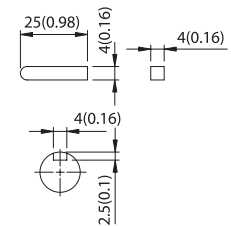


GEARHEAD

L8HK□M(B)



GEAR RATIO	L		WEIGHT		BOLT
	mm	in	kg	lb	
1/3~1/18	32	1.26	0.5	1.1	M5x50
1/20~1/200	46	1.81	0.7	1.5	M5x65



KEY SIZE

L8HK□M(B) + L8I25P□LT

